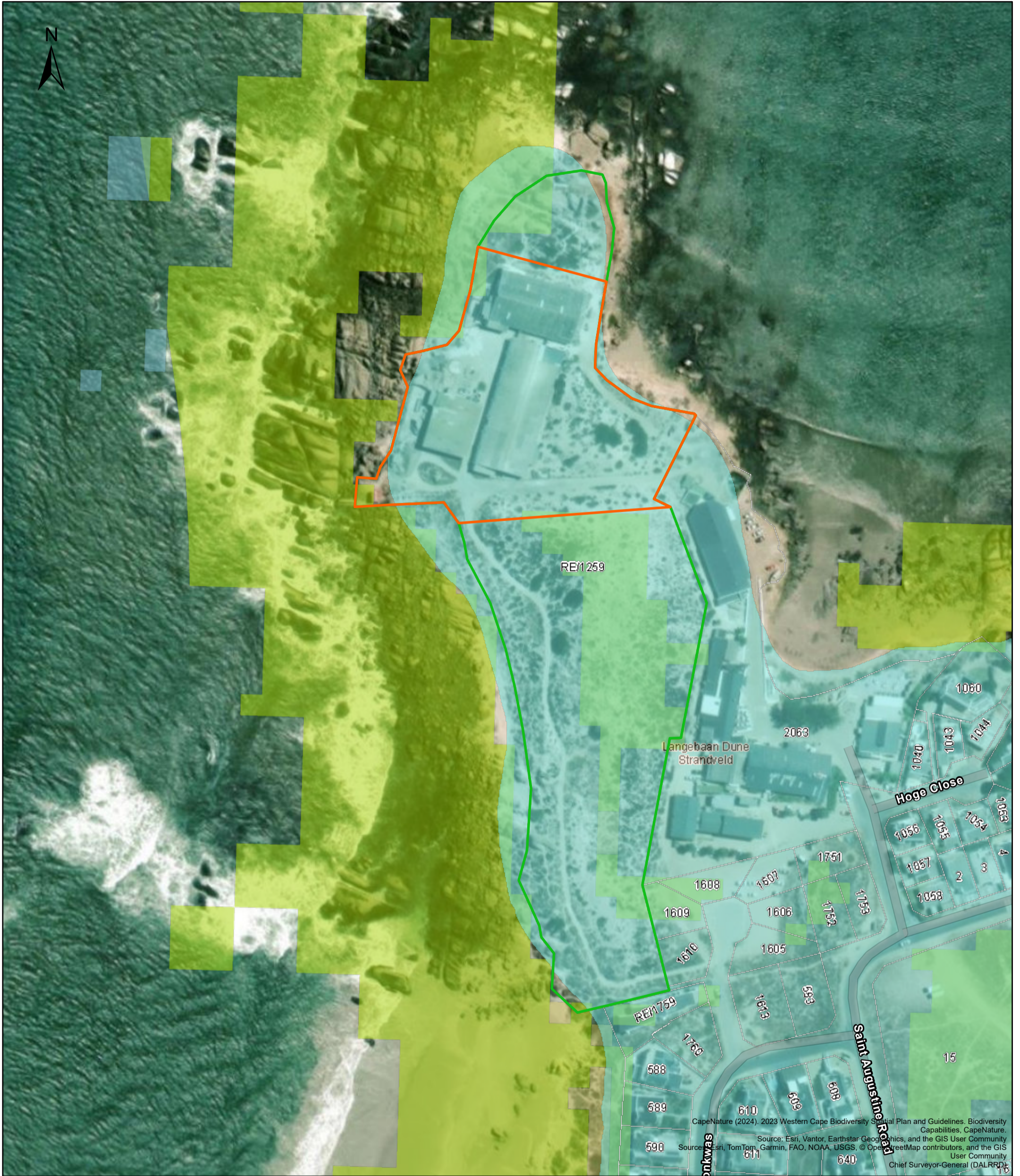


ANNEXURE D: BIODIVERSITY OVERLAY MAPS

Farm 1259, Malmesbury RD: Vegetation Map



Legend

- Farm Portions
- Erf
- VEGMAP 2024 (beta)**
- Map Code
- FS5

- Ecological Support Areas**
- ESA 1: Aquatic
- Critical Biodiversity Areas (Degraded)**
- CBA2: Terrestrial

- Critical Biodiversity Areas**
- CBA: Terrestrial

0 0.02 0.04 0.06 0.08 0.1 km

Map Center: Lon: 17°52'59.3"E
Lat: 32°48'25.2"S

Scale: 1:2,000
Date created: 2026/02/03



Western Cape Government
FOR YOU

CapeNature (2024). 2023 Western Cape Biodiversity Spatial Plan and Guidelines. Biodiversity Capabilities, CapeNature. Source: Esri, Vantor, Earthstar Geographics, and the GIS User Community. Source: Esri, TomTom, Garmin, FAO, NOAA, USGS, © OpenStreetMap contributors, and the GIS User Community. Chief Surveyor-General (DALRRD)