

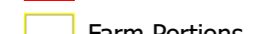



ANNEXURE A1: LOCALITY

Farm 1259, Malmesbury RD decommissioning site



Legend

-  Servitude Line
-  Servitude Area
-  Farm Portions
-  Erf

Map Center: Lon: 17°53'3.1"E
Lat: 32°48'24.3"S

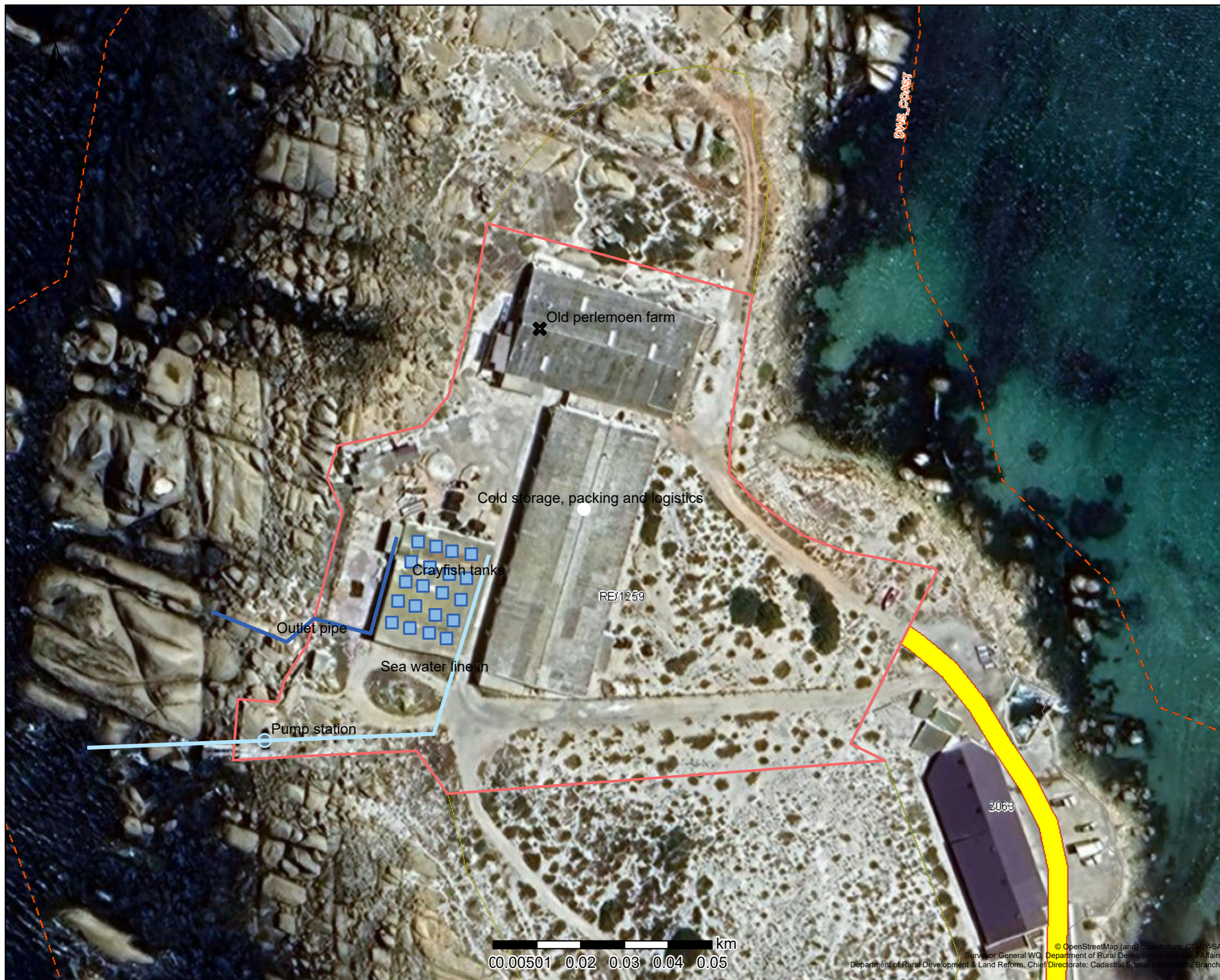
Scale: 1:3,000

Date created: 2023/11/30



© OpenStreetMap (and) contributors, CC-BY-SA
Surveyor General, W.C. Department of Rural Development and Land Affairs
Department of Rural Development & Land Reform, Chief Directorate: Cadastral Spatial Information, Branch

Farm 1259 aquaculture setup



Legend

- Servitude Line
- Servitude Area
- Farm Portions
- Erf

Map Center: Lon: 17°52'59.9"E
Lat: 32°48'21.9"S

Scale: 1:1,000

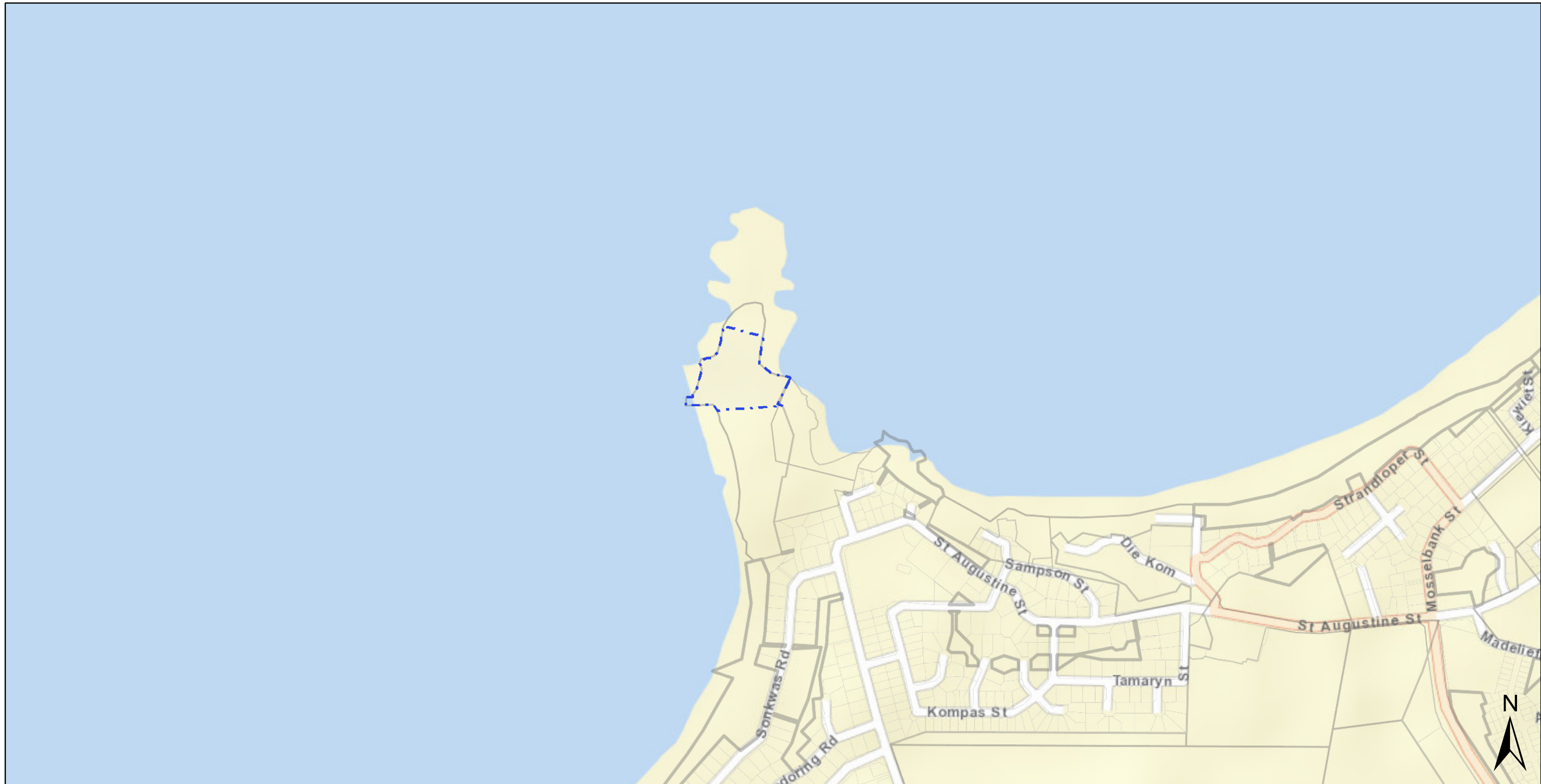
Date created: 2023/12/01



**Western Cape
Government**
FOR YOU



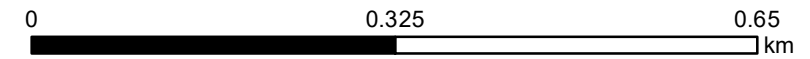
Screening Report Map



3 January 2024

Legend

- | | | |
|--|--|--|
|  Site Area | Cadastre |  Public Place |
|  EIA Application Development Footprint |  Erven | |
|  EIA Application Site |  Farm Portion | |
|  National Jurisdiction Area |  Farm | |
| |  Agri Holding | |



Sources: Esri, HERE, Garmin, USGS, Intermap, INCREMENT P, NRCan, Esri Japan, METI, Esri China (Hong Kong), Esri Korea, Esri (Thailand), NGCC, (c) OpenStreetMap contributors, and the GIS User Community